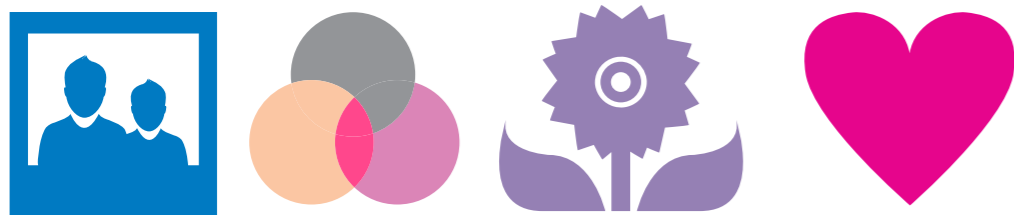


Improving Me

Improving Me for me...

- Women
- Men
- Baby
- Siblings
- Future generations
- Workforce
- Communities



CCGs in partnership for the programme include:



NHS Halton CCG
NHS Knowsley CCG
NHS Liverpool CCG
NHS Southport & Formby CCG
NHS South Sefton CCG

NHS Warrington CCG
NHS West Lancashire CCG
NHS Wirral CCG
NHS St Helens CCG

The aims of the programme are:

- To provide safe, high quality, equitable maternity services.
- To reduce variation across maternity services and improve outcomes.
- To offer informed choices for antenatal, birth and postnatal care.
- To deliver excellent experiences for women, babies and their families.
- To align with other reviews and NHS priorities which promote localised service delivery and support individuals in prioritising their own health and wellbeing.



Nationally over 7000,000 births per year

Number of births has increased by 25% in last 10 Years

Number of births at highest level for 40 Years



Deficit increased by 47% from £7.9 million in 2013/14 to £11.7 million in 2014/15 (Cheshire and Merseyside)

£11.7 million = the gap between payment and cost of maternity service in 2014/15 (Cheshire and Merseyside)

Maternity Care spend by NHS is **£2.6 Billion**



20% of £482 million of budget spent on Clinical Negligence cover

Claims increased **80%** in past 5 years



Improving Me

In Merseyside only about half of pregnant women have the whooping cough vaccination



Cheshire and Merseyside has the highest unexpected admissions to Neonatal Intensive Care.

10% Dads suffer from Post natal depression

73% men are worried or concerned about their partners mental health during the perinatal period



Population Figures

Mid-year estimates for 2013 for women aged 15-44 (normally considered the 'child bearing age group').

(Figures from CHAMPS 2015)

West Lancashire	20,378
Knowsley	29,090
Liverpool	106,989
St Helens	32,656
Sefton	46,639
Wirral	57,135
Halton	24,255
Warrington	38,751
IME Area Total	355,893
Cheshire	
Cheshire East = 64,032	
CWAC = 60,709	124,741
C&M Total	480,634

93.2%

women seen by midwife by 12 weeks 6 days



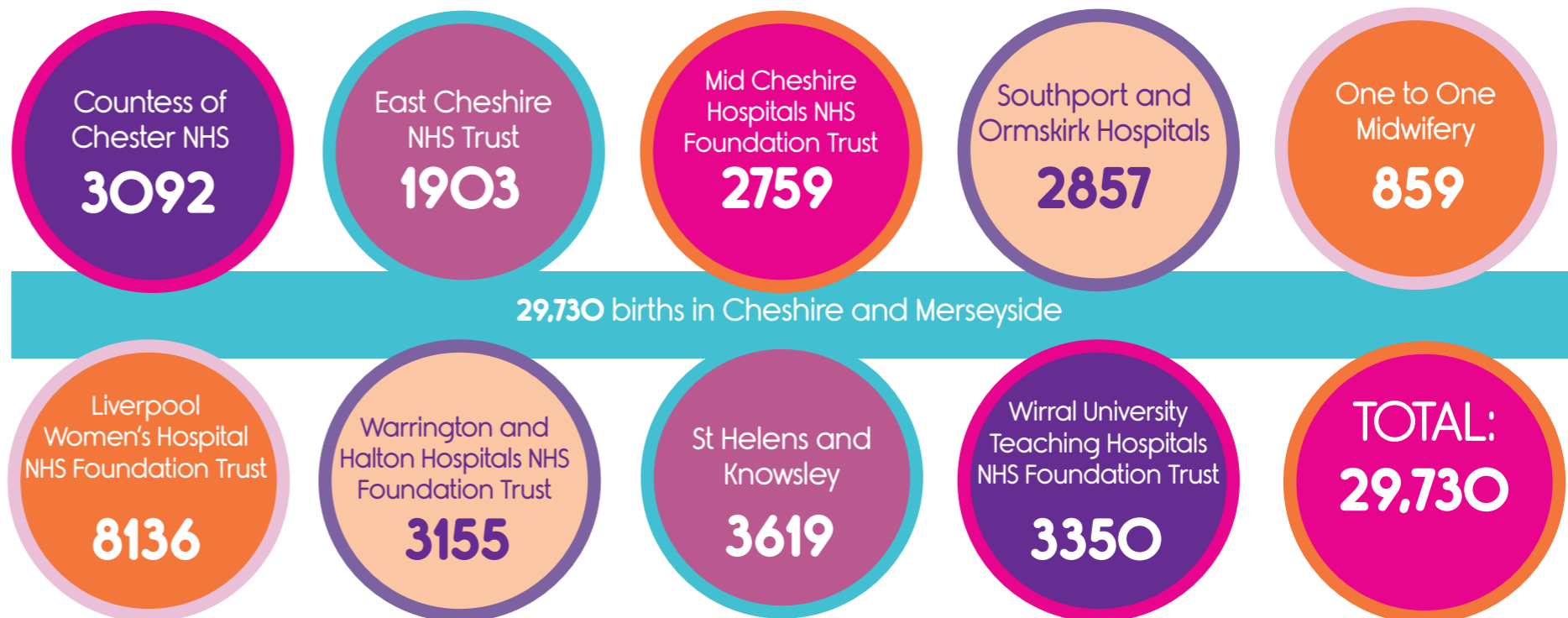
88% of women had not met their midwife before the birth

1 provider in Cheshire and Merseyside reached recommended 1:29 MW to birth recommended rate in 2013/14

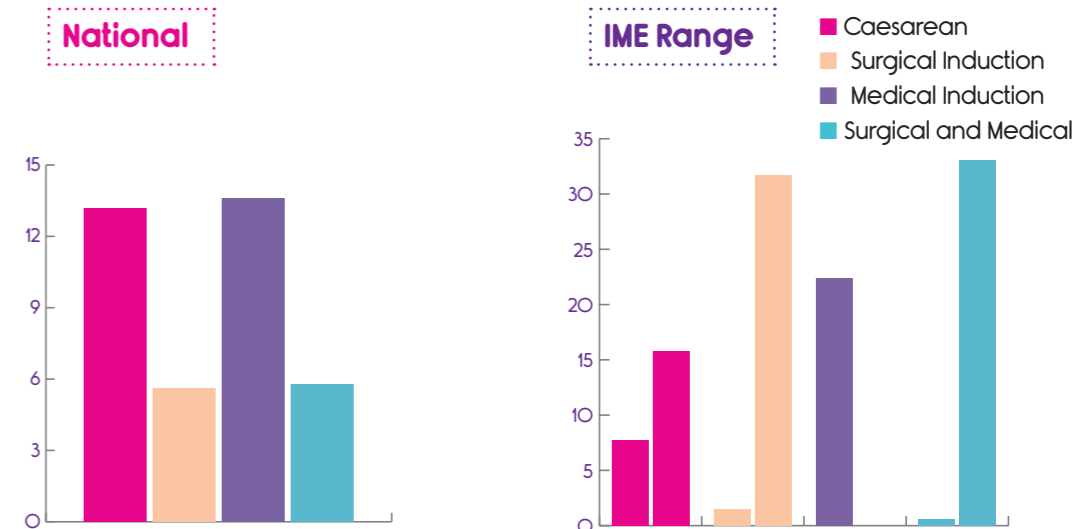
3200 shortage of midwives estimated by Royal College of Midwives



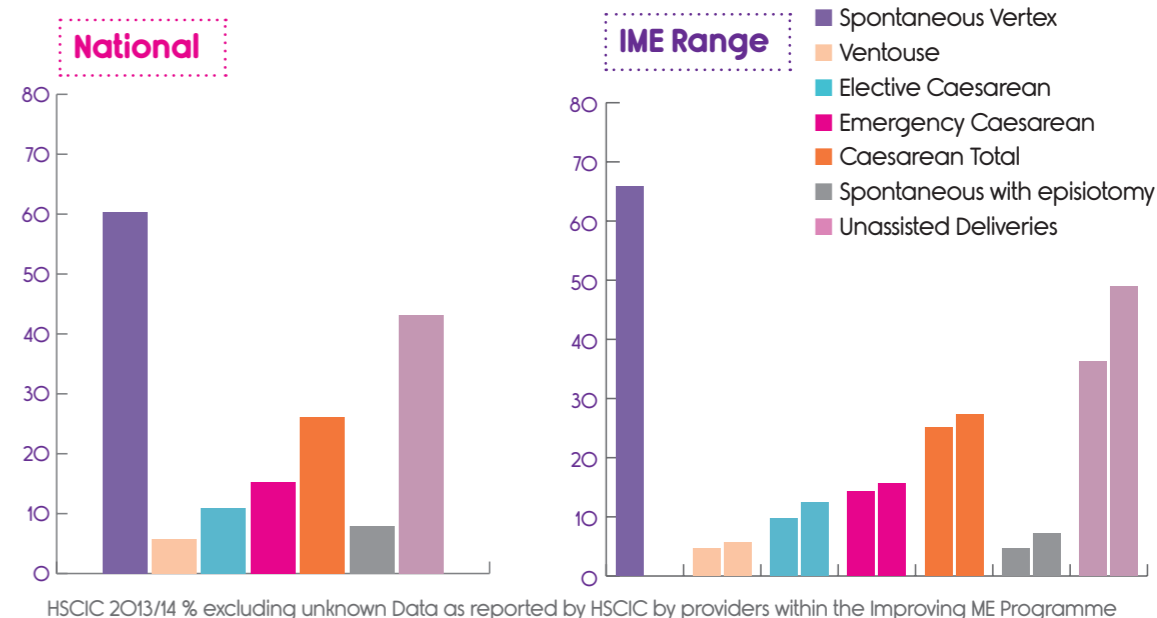
Number of births 2013-2014



Onset of labour - Comparing the National with the IME range



Method of Delivery - Comparing the National with the IME range



Improving Me



Health

Suicide is leading cause of death for women during pregnancy and within 1 year of giving birth

Up to **20%** develop a mental health problem during pregnancy. **Only 50% are formally diagnosed**

Perinatal mental health problems cost **£8.1billion**. **This is 5 times the cost of improving services**

Gestational diabetes affects 1:5, babies born to mothers with GD 6 x more likely to get diabetes themselves



1:29 recommended ratio of midwives to birth (RCM), **Average achieved 1:31**

3200 shortage of midwives estimated by Royal College of Midwives

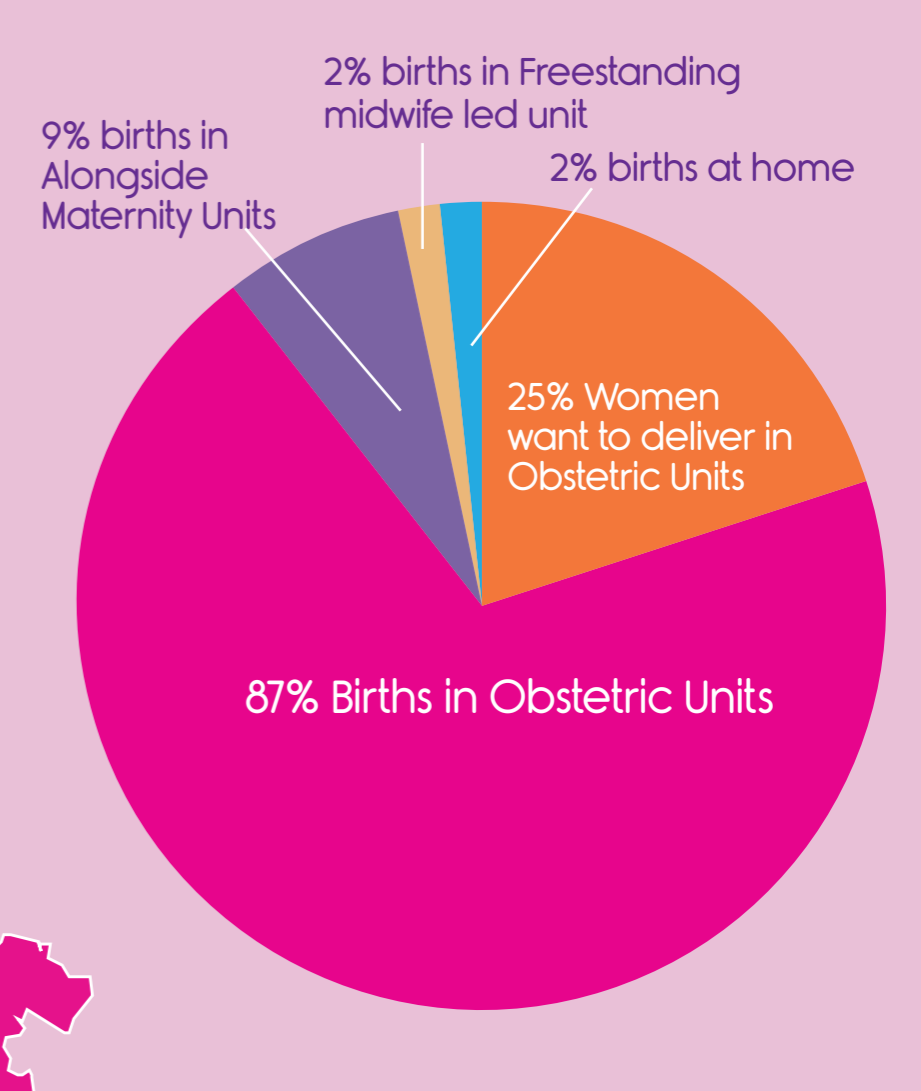
25-30% gaps in Obstetrics and Gynaecology rotas

73% of units provided **60 hours** of consultant cover on delivery suite, half of all units not meeting the recommended level

Improving me Map



Increase in Complexity of birth



Birthplace study (**65,000 births**) concluded midwife-led care as safe as hospital care for low-risk pregnancies (**45%**)

1 in every 200 births in the UK ends in **stillbirth**
1 in 10,000 maternal deaths
1 in 11 deaths flu related and could have been prevented by flu jab